

REVISIONS	
07-15-2022	
01-15-2021	
04-17-2020	
01-18-2019	
07-20-2018	
01-19-2018	
07-21-2017	
07-15-2016...	

STDs ENGINEER
Duettel

STATE OF OHIO DEPARTMENT OF
TRANSPORTATION ADMINISTRATOR

Adam Koenig

STRUCTURE GROUNDING

DESIGN AGENCY



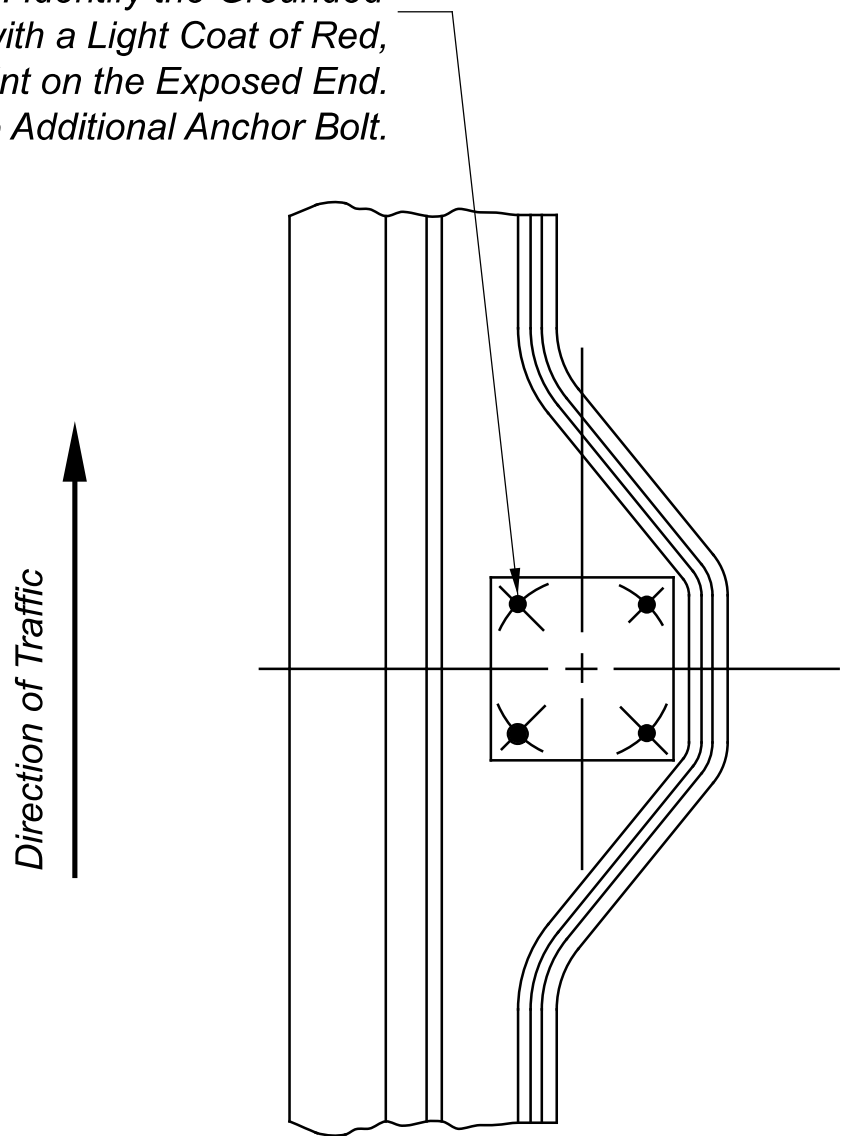
SCD NUMBER
HL-50.21

SHEET	TOTAL
4	4

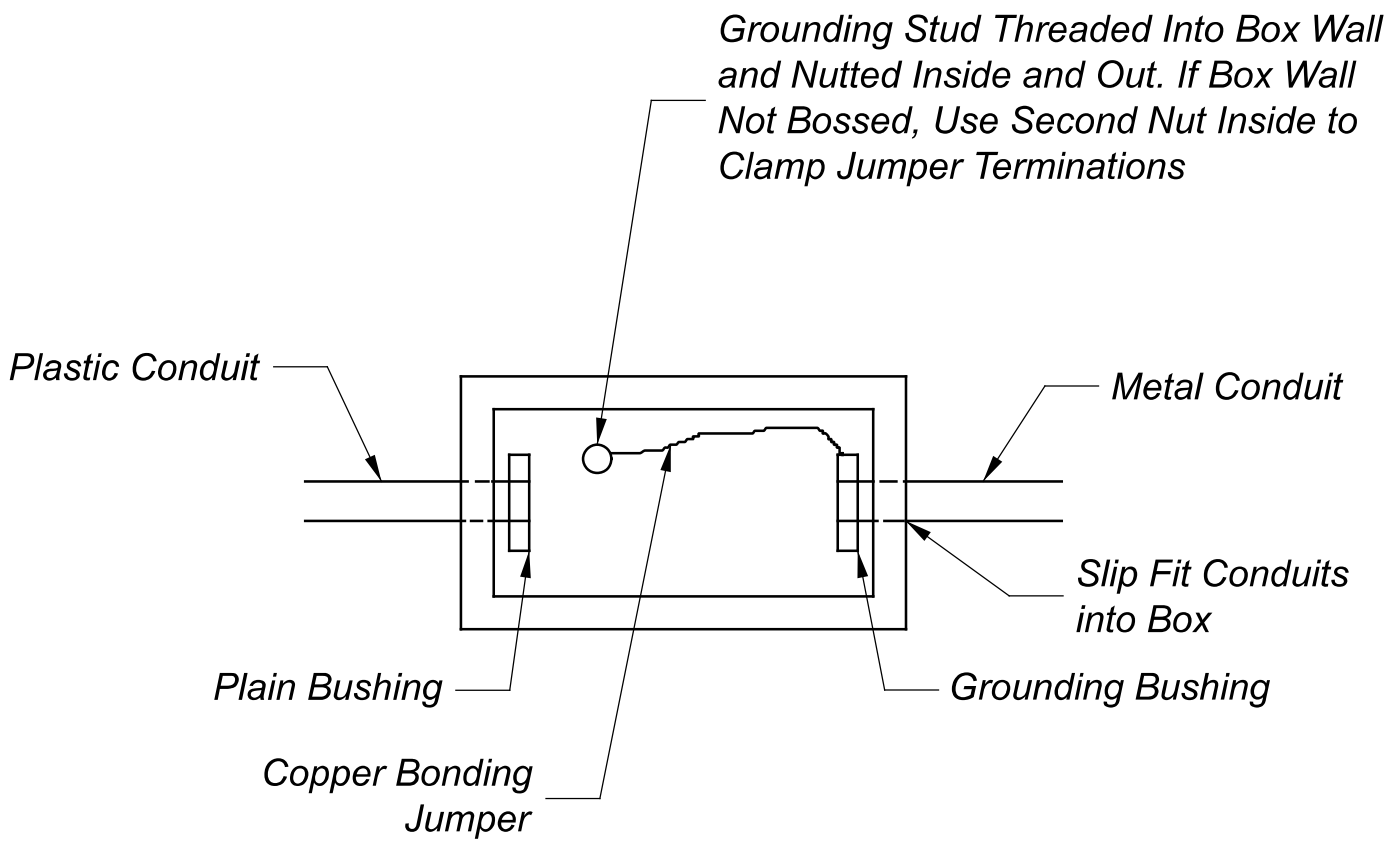
NOTES:

1. All connections and bare copper strands of the 1/0 AWG cable exposed to concrete shall be covered with mastic to prevent contact with the concrete.
2. Use UL-listed exothermic weld devices for all structure grounding connections, except for grounding plates, which may be UL-listed commercial products or the fabricated design shown below.

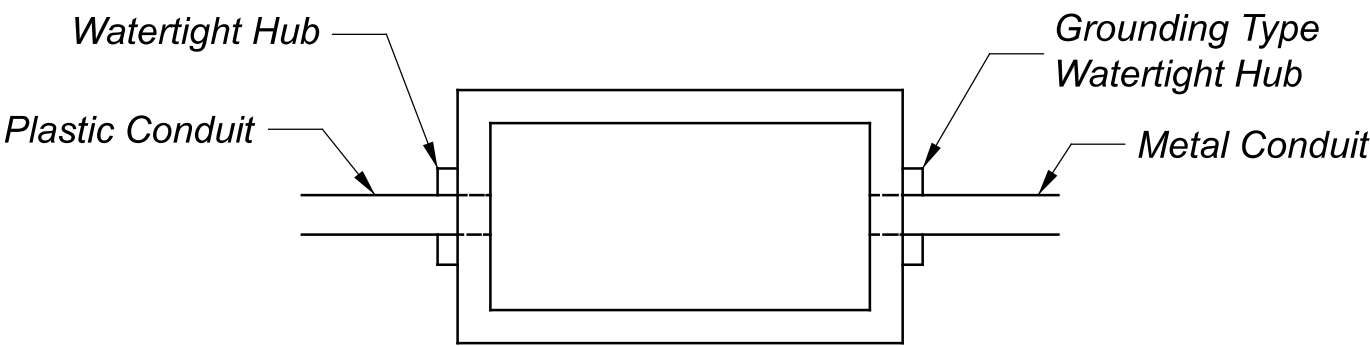
Always Ground this Anchor Bolt on the Roadway Side, Downstream, in the Direction of Adjacent Traffic. Identify the Grounded Bolt with a Light Coat of Red, Weather-Resistant Paint on the Exposed End. Ground One Additional Anchor Bolt.



LIGHT POLE PARAPET (PLAN VIEW)

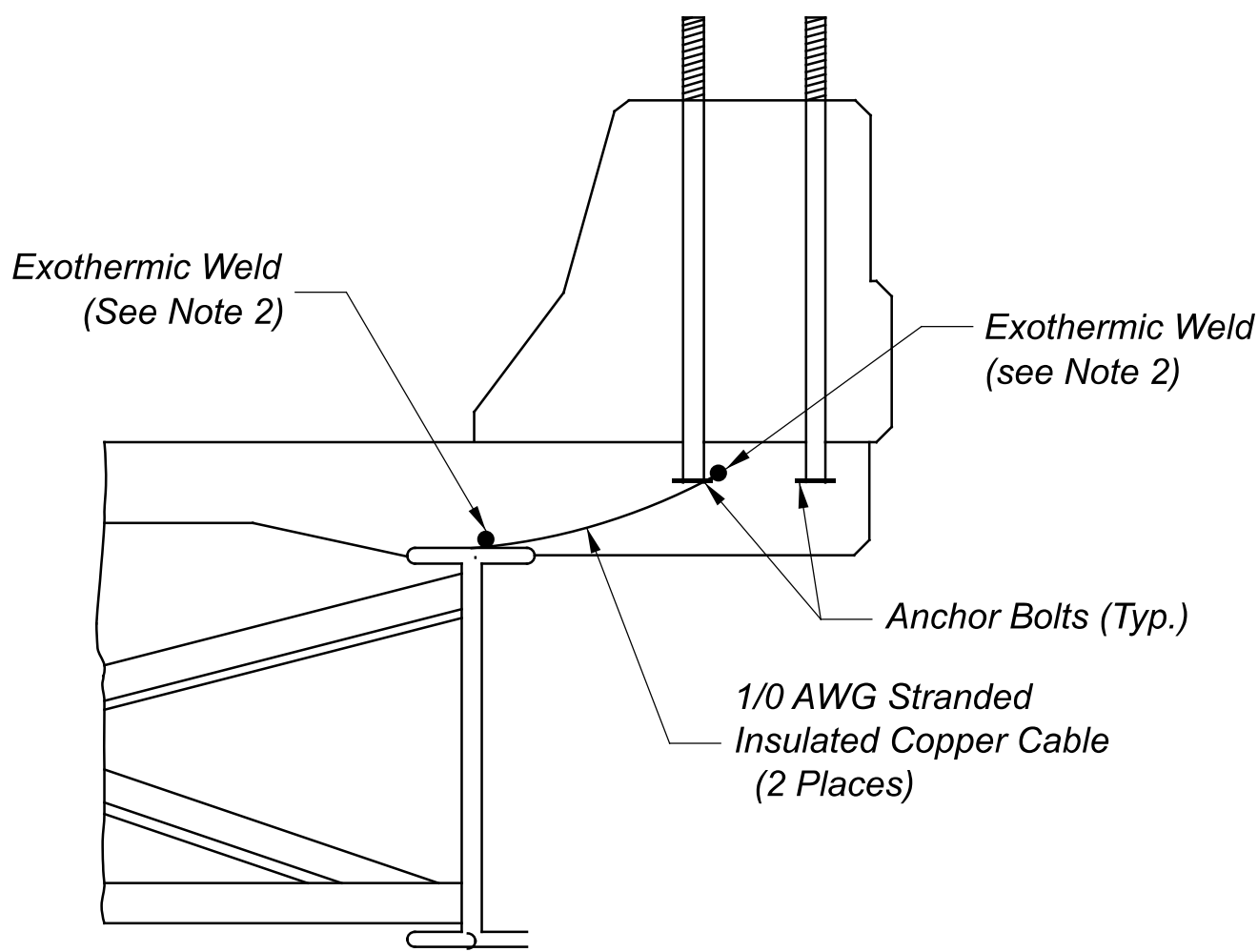


EMBEDDED JUNCTION BOXES

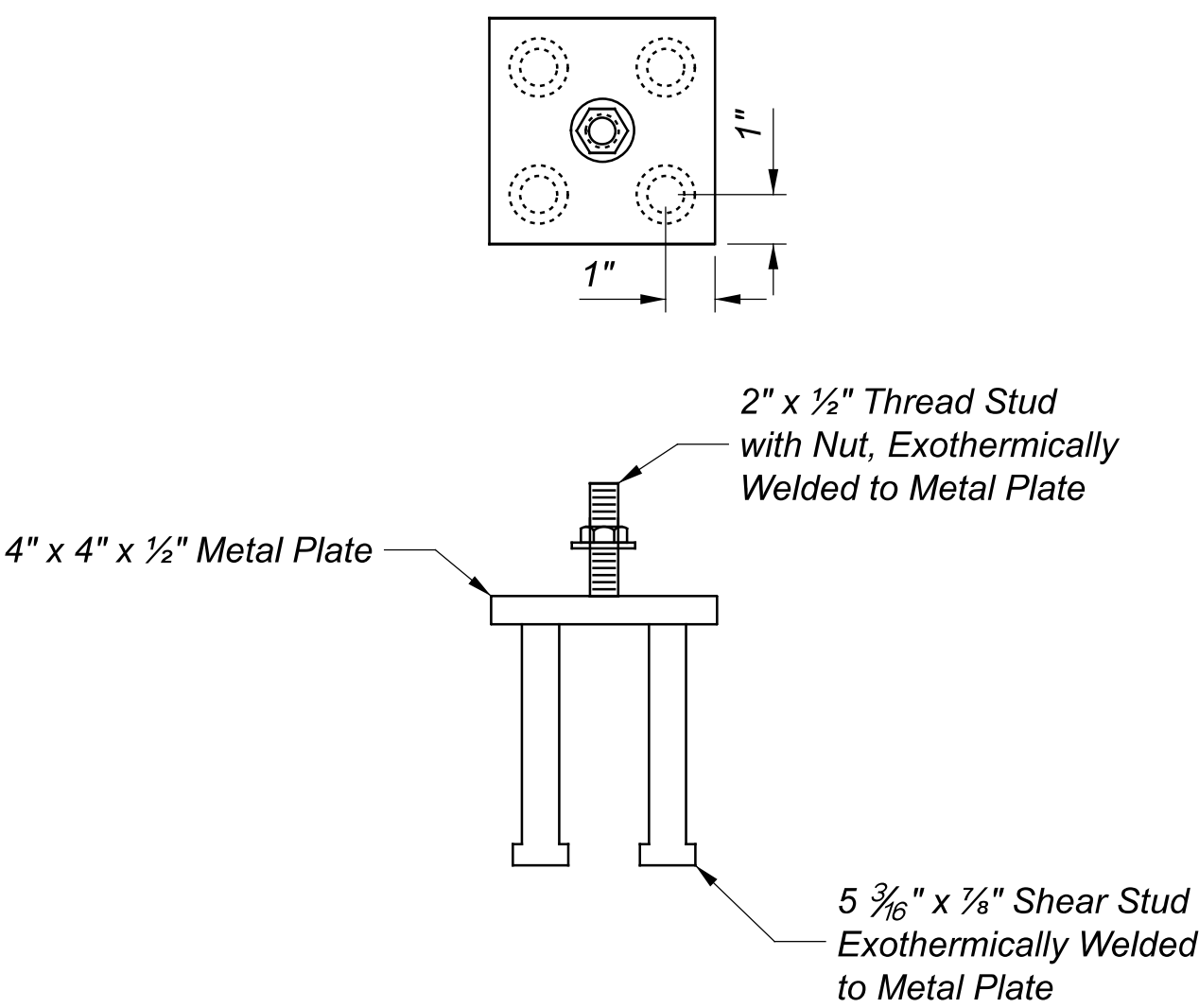


EXPOSED JUNCTION BOXES

CONDUIT GROUNDING



LIGHT POLE PARAPET (ELEV. VIEW)
& ANCHOR BOLT GROUNDING (TYP.)



GROUNDING PLATE DETAILS (TYP.)
(See Note 2)