

Predictive & Preventative Maintenance

Time is money. We can save you both.

Asset management is a core principle to maintaining a healthy operation, and as an asset manager, Loeb Electric knows how important predictive and preventative maintenance programs are to your daily operations and your bottom line. Through these programs, we narrow in on critical points that need fixed or replaced, with your safety and return on investment (ROI) top of mind. With an experienced staff, a national partner network, and Professional Project Management, Loeb is the expert partner you need to keep your operations running.

LOW VOLTAGE PREVENTATIVE MAINTENANCE (LVPM)

It is widely documented† that a well-designed, regularly scheduled preventative maintenance program can significantly reduce failure rates in electrical equipment—saving you immense costs in emergency repair and unplanned downtime in operations. Switchgear preventative maintenance consists of cleaning, inspecting, and testing your electrical system, requiring a full or partial shutdown of your facility. This takes significant planning to ensure safety and timely completion to keep your business running. Loeb is here to prepare and execute the plan—working around your business demands—whether it’s annually, every 5 years, or somewhere in between.

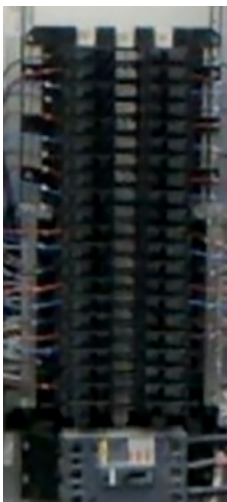


Image 1

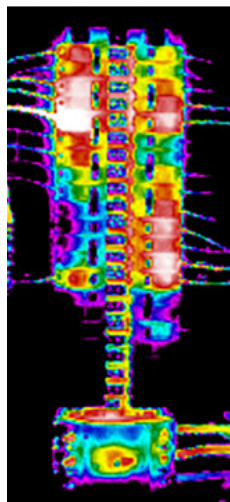


Image 2

INFRARED (IR) THERMOGRAPHY

With over 250,000* IR scans performed, revealing more than 12,000 potential electrical hazards, our team of Certified Thermographers can identify variances in heat patterns due to poor electrical connections, unbalanced loads, and defective components before they result in a full or partial equipment failure. Over time, we use this collected data to perform a quantitative analysis, providing a recommended plan based on predictive performance.

Looking at the panel board in image 1, can you identify any problems? Image 2 is infrared and reveals hot-spots within the panel board that can *only* be detected with infrared technology. These thermal anomalies indicate potential issues or hazards that when left unchecked, often lead to equipment outages and unplanned downtime.

Continued on next page ▶

†Eaton white paper: [The Benefits of a Preventive Maintenance Service Plan for your UPS \(click to read\)](#)

*Through 2019

Continued from front

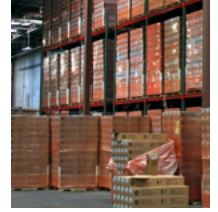
INFRARED WINDOW SUPPLY & INSTALLATION

In high-voltage switchboards, it's best to perform IR scans through infrared viewing windows, as 99% of arc flash incidents occur when a panel is open. Loeb provides and installs FLUKE's infrared windows to ensure these scans are performed safely and quickly, reducing the possibility of dangerous arc flashes.



CRITICAL SUPPLIES: INVENTORY MANAGEMENT & LOGISTICS

When critical parts fail and replacements aren't immediately accessible, your operation may completely shut down. Don't let this disaster strike! Loeb will create a customized plan for the material needs, warehousing, and delivery of critical supplies, ensuring the failure doesn't lead to disaster.



Project Profile: Preventative Maintenance in Action

Keeping the world's largest online retailer running

As the world's largest online retailer continues to expand operations, they needed to plan and implement a proactive, preventative maintenance program, without severely disrupting their 24/7 business operations.

After discussing current challenges and needs, Loeb Electric, and Eaton's Electrical Engineering Services & Systems (EESS) division, brought forward a full-scale Preventative Maintenance program. The program consisted of major and minor LVPM, FLUKE IR window installation, IR thermography, and arc flash coordination studies. In addition, Loeb collaborated with the customer to design an arc flash relay solution specifically designed to

lower the incident energy risk to associates and vendors operating or repairing electrical distribution equipment.

Through the Loeb Electric nationwide partner network, professional project management, material supply, and logistics operations, as well as the expertise of Eaton's engineer's, the program has delivered to the customer's challenges, while ensuring their business was not significantly disrupted.

Loeb continues to project manage this nationwide preventative maintenance program and collect data to drive further improvements.

Let's discuss how Loeb Electric can support your predictive & preventative maintenance. Contact a Sales Representative at **800.686.6351** or visit **LoebElectric.com**.

Proud distributor of